

Enrollment, Demographic & Class Size Profile

Robbinsdale Area Schools
Independent School District 281
Fall 2009

2008-2009 – An Extraordinary Year

- July 2008 - School board approved a community-focused district strategic plan outlining the district's vision, priorities and goals. A key priority is to maximize resources and demonstrate financial accountability.
- October 2008 – Focusing on this priority the school board commissioned a facilities study to “right-size” our facilities to respond to current and future enrollment with a goal of saving facilities cost.
- November 2008 - the community supported the school district by approving the operating levy.

2008-2009 – An Extraordinary Year

- February 2009 – Based on the Facilities Study, the school board decided to close two elementary schools and one middle school and to establish new attendance boundaries for the remaining 8 neighborhood elementary schools and 2 middle schools.

- February – August 2009 – The district developed and executed a transition plan to prepare the facilities, staff the schools and register students for the 2009-2010 school year within the reorganized district structure.

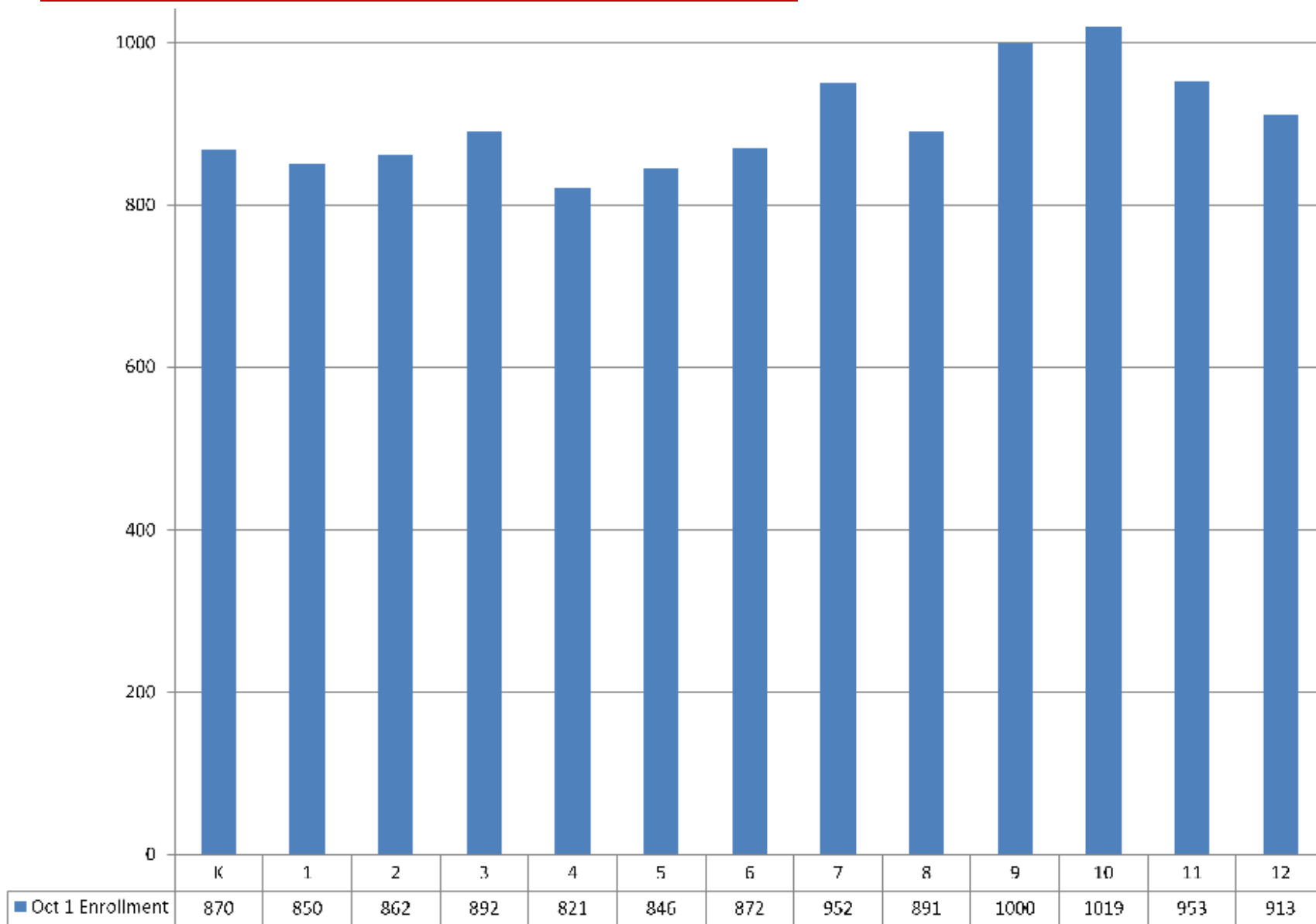
Transitioning into a New School Year

Students Attending School in a Different Facility Because:	
The neighborhood school closed (Sandburg, Pilgrim Lane, Sunny Hollow)	994
The attendance boundary was changed	4,089
RSI elementary magnet was moved to Sunny Hollow	538
RSI middle school program was moved to Plymouth	219
IB-MYP was moved to Robbinsdale	275
<u>A transfer was approved (80% of apps were approved)</u>	
Resident	828
Non-resident	382

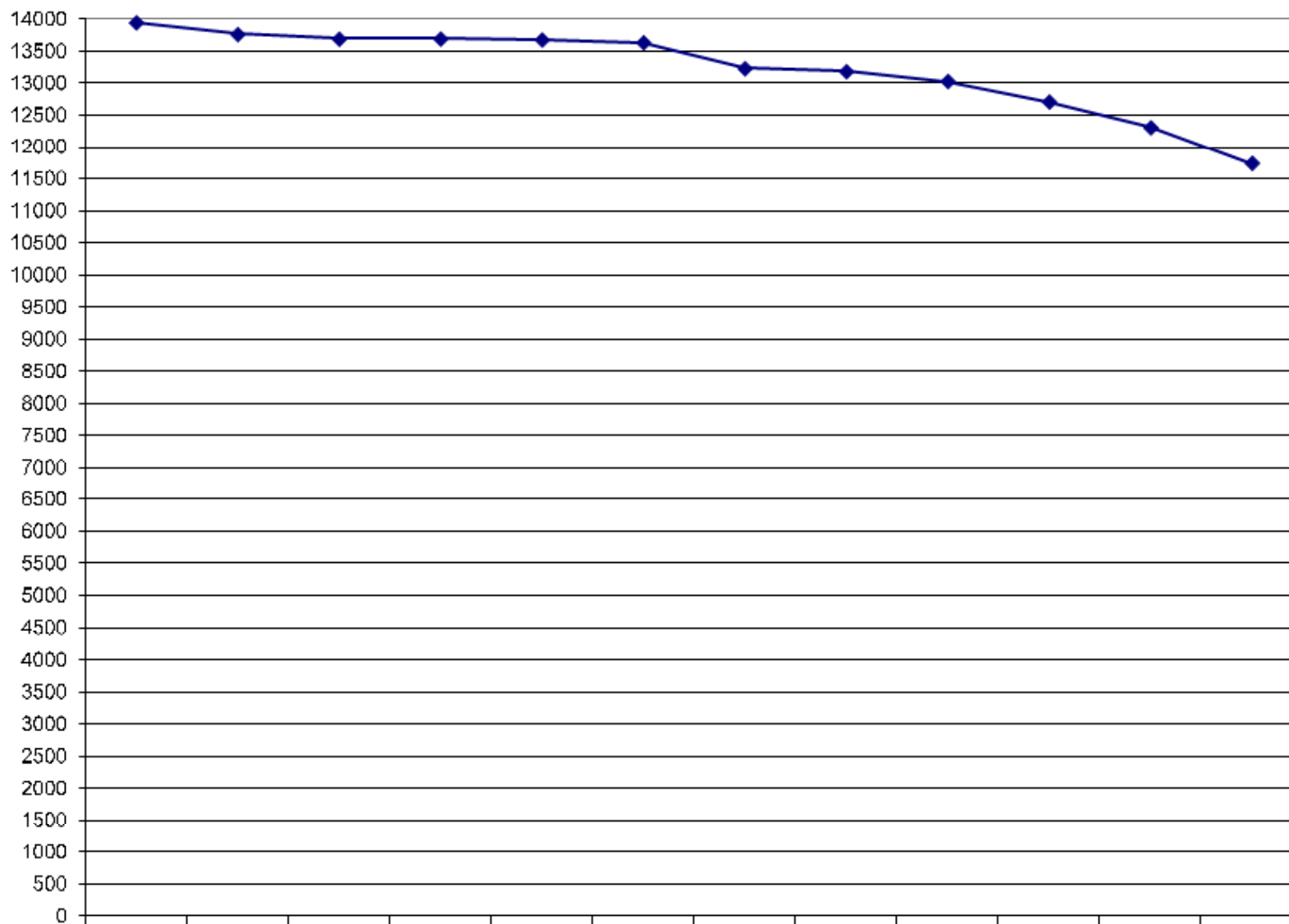
October 1 Enrollment by School & Grade

October 1, 2009	Total	1/2 K	K	1	2	3	4	5	6	7	8	9	10	11	12
Forest	631	44	69	103	95	122	101	97							
Lakeview	427	42	22	83	83	66	72	59							
Meadow Lake	646	57	66	104	111	98	112	98							
Neill	562	58	22	84	102	119	78	99							
Robb Spanish Immersion	657	88	45	111	109	109	103	92							
Noble	426	45	22	67	72	71	70	79							
Northport	574	35	65	98	101	83	96	96							
Sonnesyn	587	73	23	101	97	99	92	102							
Zachary Lane	631	73	21	99	92	125	97	124							
Plymouth	1261								420	417	424				
Robbinsdale	1454								452	535	467				
Cooper	1824											470	479	463	412
Armstrong	2061											530	540	490	501
Total	11741	515	355	850	862	892	821	846	872	952	891	1000	1019	953	913

October 1 Enrollment by Grade

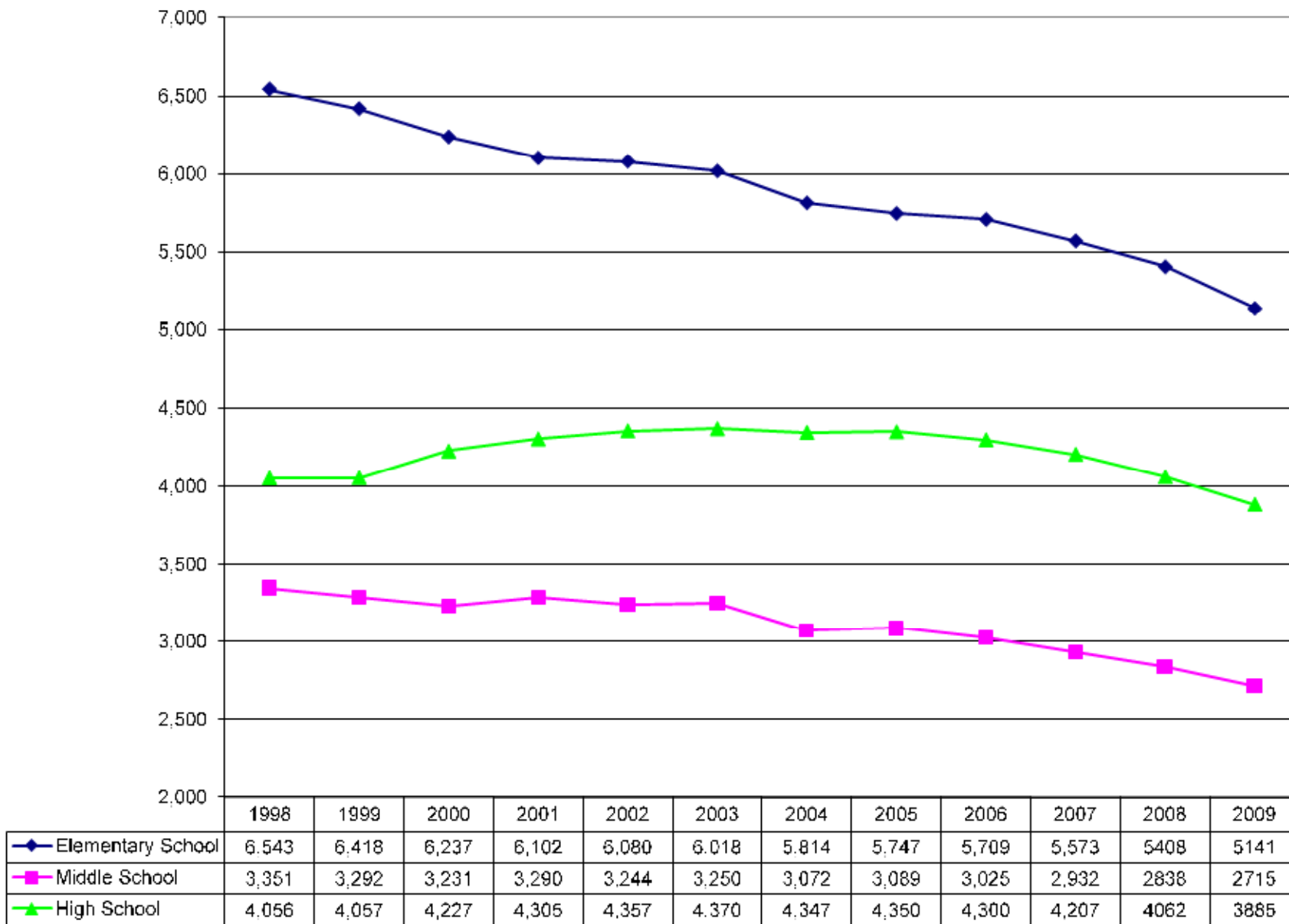


October 1 Enrollment (1998-2009)

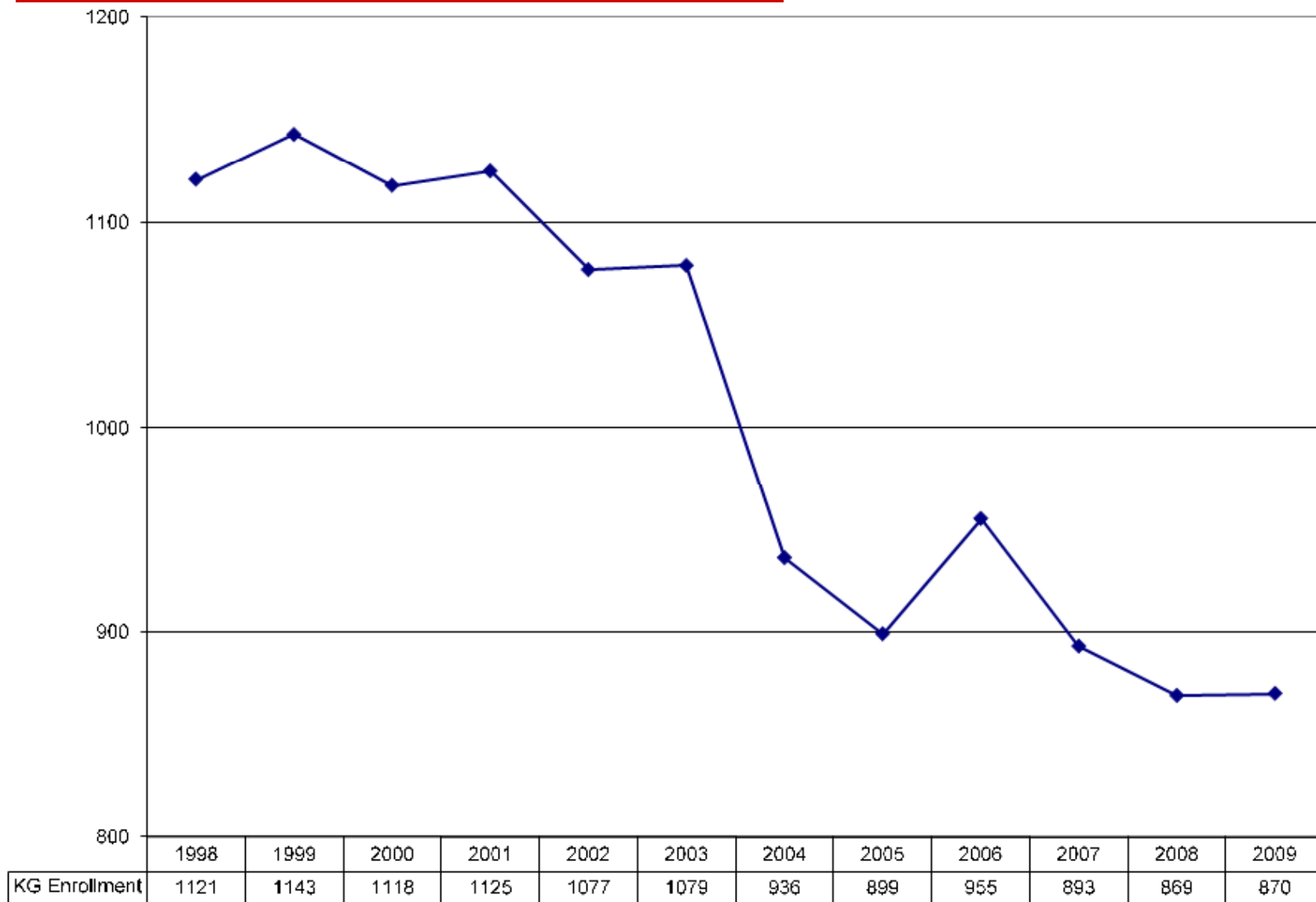


	1998	1999	2000	2001	2002	2003	2004	2005	2006	2007	2008	2009
Total Enrollment	13,950	13,767	13,695	13,697	13,681	13,638	13,233	13,186	13,034	12,712	12,308	11,741

October 1 Enrollment by Level

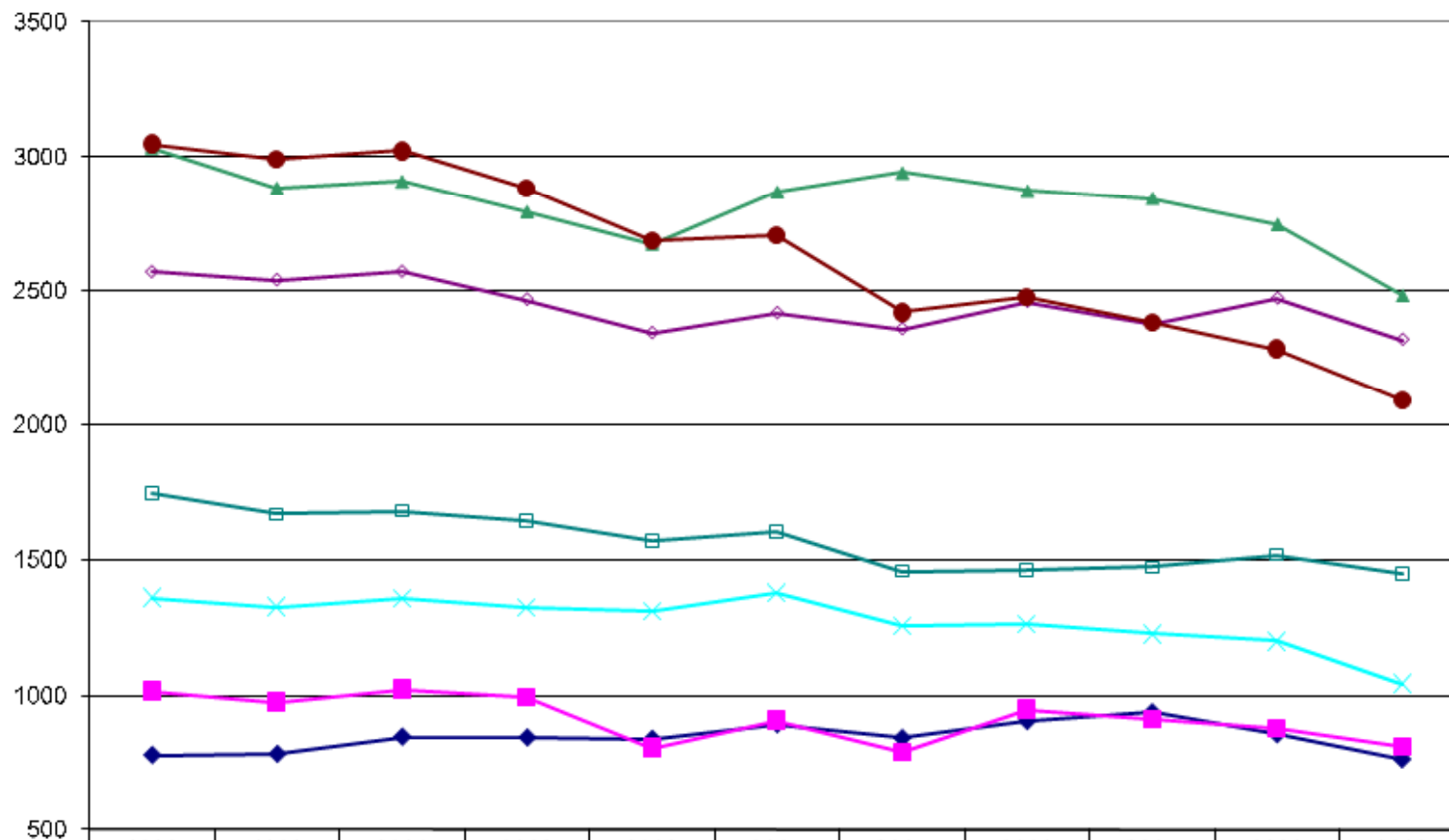


October 1 Kindergarten Enrollment



(5's Alive Program eligibility changed in 2004 reducing KG enrollment by 100 students)

Enrollment by City

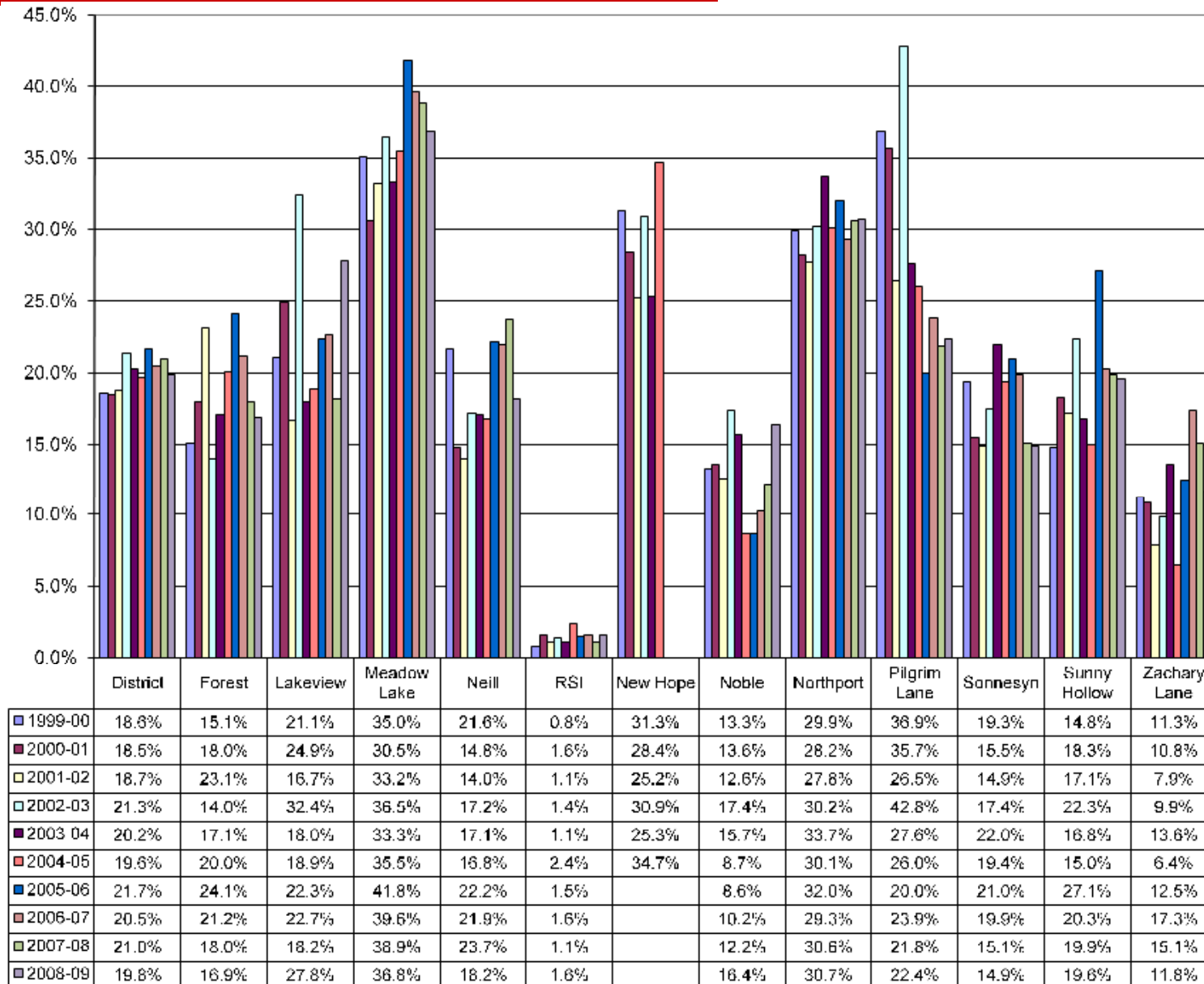


	1998	1999	2001	2002	2003	2004	2005	2006	2007	2008	2009
◆ Brooklyn Center	780	784	848	845	840	894	843	906	938	857	764
■ Brooklyn Park	1018	977	1024	993	807	909	791	950	911	881	811
▲ Crystal	3036	2885	2910	2796	2675	2870	2942	2874	2845	2748	2481
× Golden Valley	1363	1329	1360	1328	1313	1382	1259	1263	1228	1202	1045
◇ New Hope	2569	2539	2570	2467	2343	2417	2358	2459	2379	2471	2318
● Plymouth	3049	2992	3023	2886	2689	2707	2420	2477	2382	2284	2090
□ Robbinsdale	1744	1669	1681	1646	1568	1603	1458	1460	1472	1519	1448

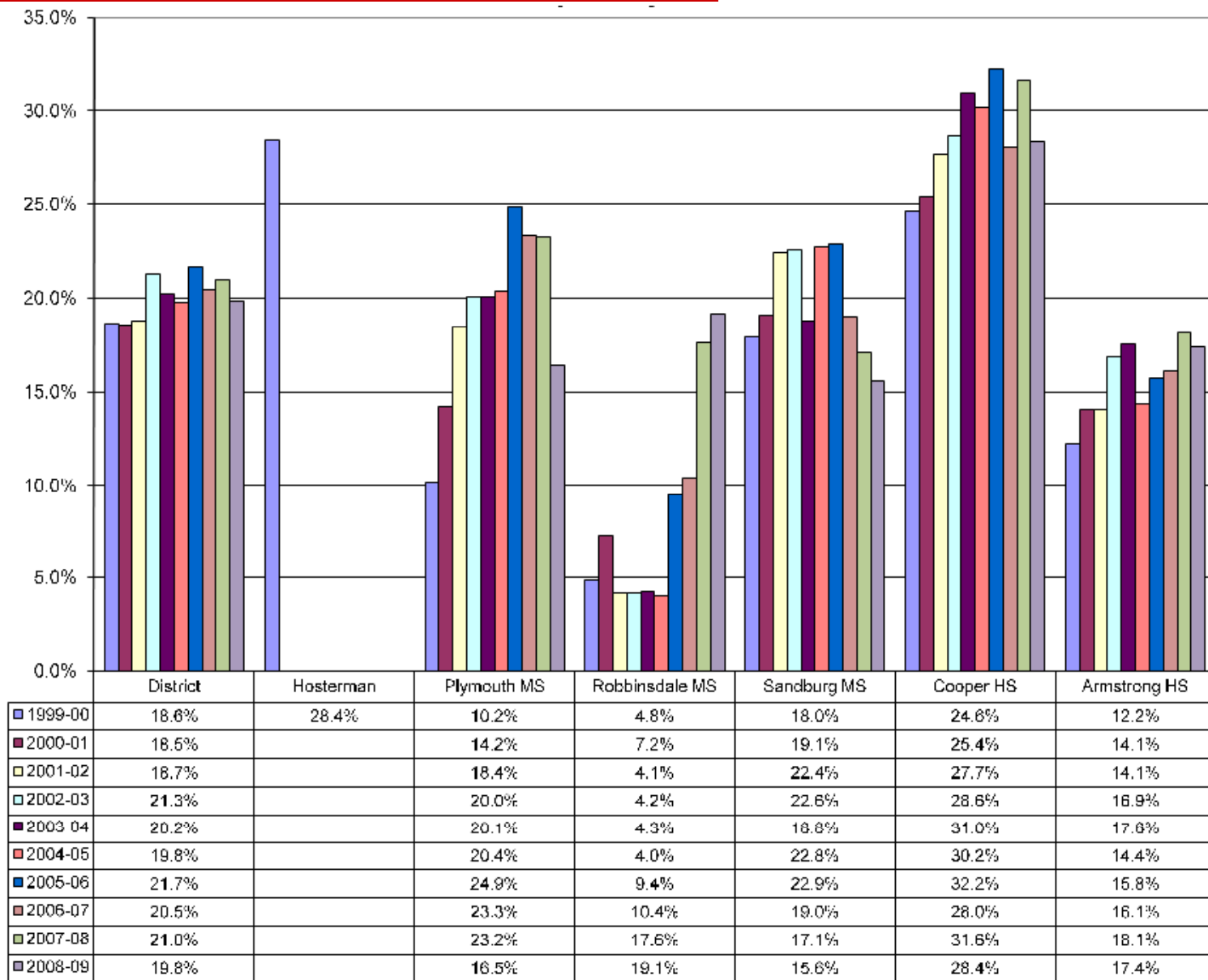
Enrollment Summary

- ❑ October 1, 2009 enrollment is 567 students less than Fall 2008 Enrollment.
- ❑ The core of the decline is structural; due to lower birth rates the number of incoming Kindergarten students is less than the graduating seniors from the prior year.
- ❑ Several years of continued enrollment decline was a driving factor to close three schools last spring.
- ❑ The decline is evident in all cities within the school district.
- ❑ Most of the decline was anticipated and is accounted for in the revenue assumptions of the budget.
- ❑ Consistent with projections, enrollment at K and 1st grades show signs that the structural decline is slowing.

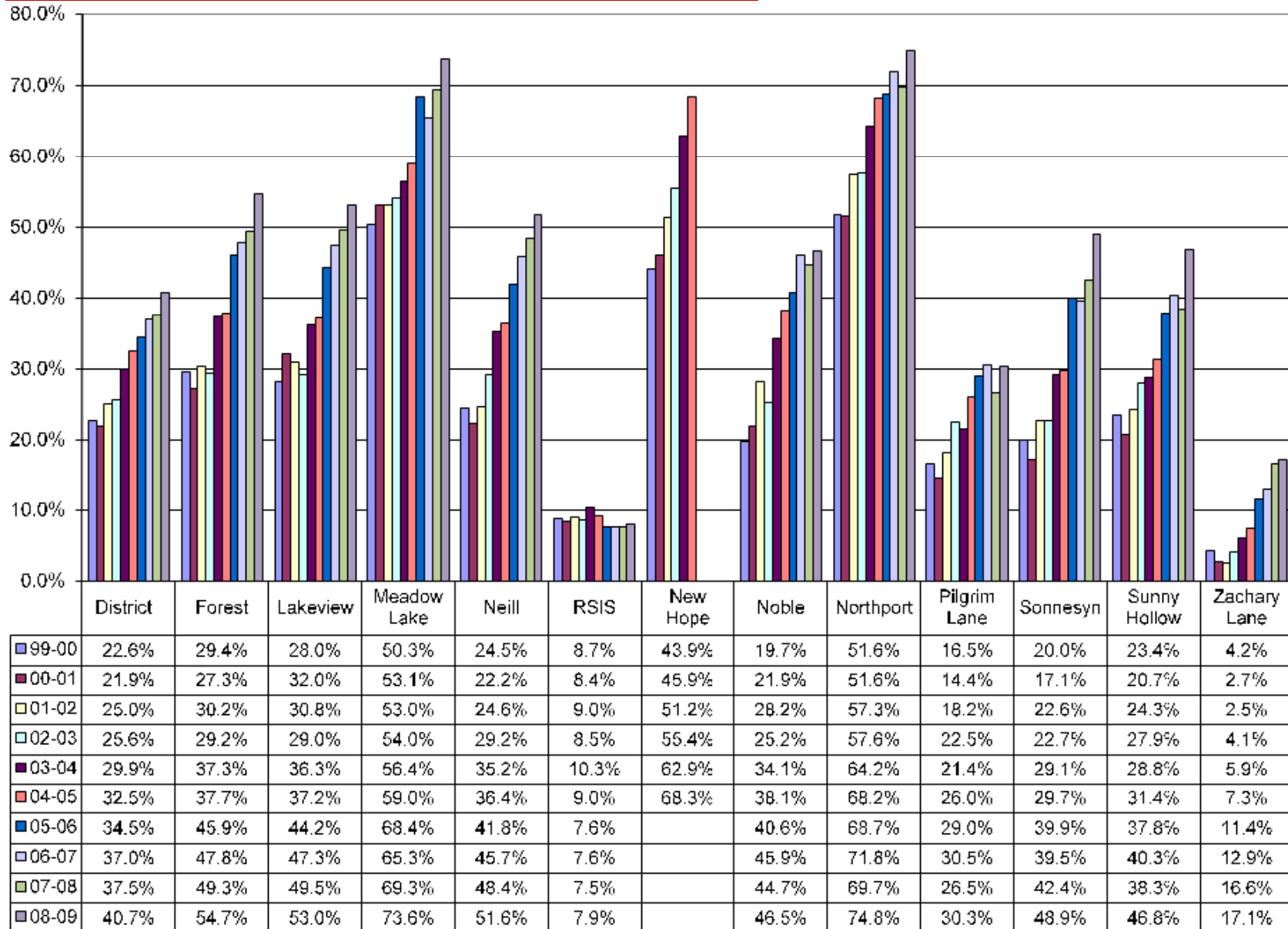
Elementary – Mobility Index



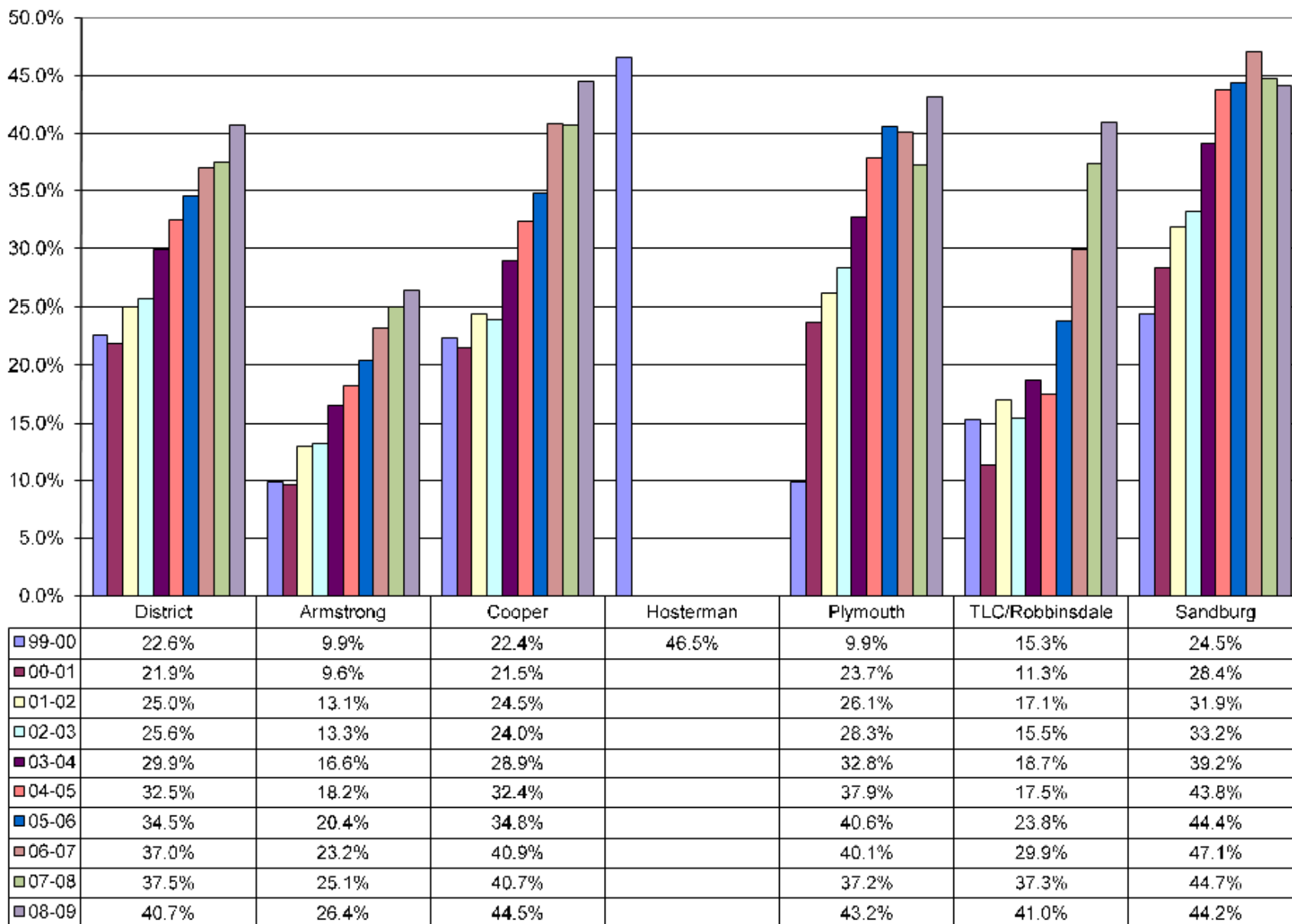
Secondary – Mobility Index



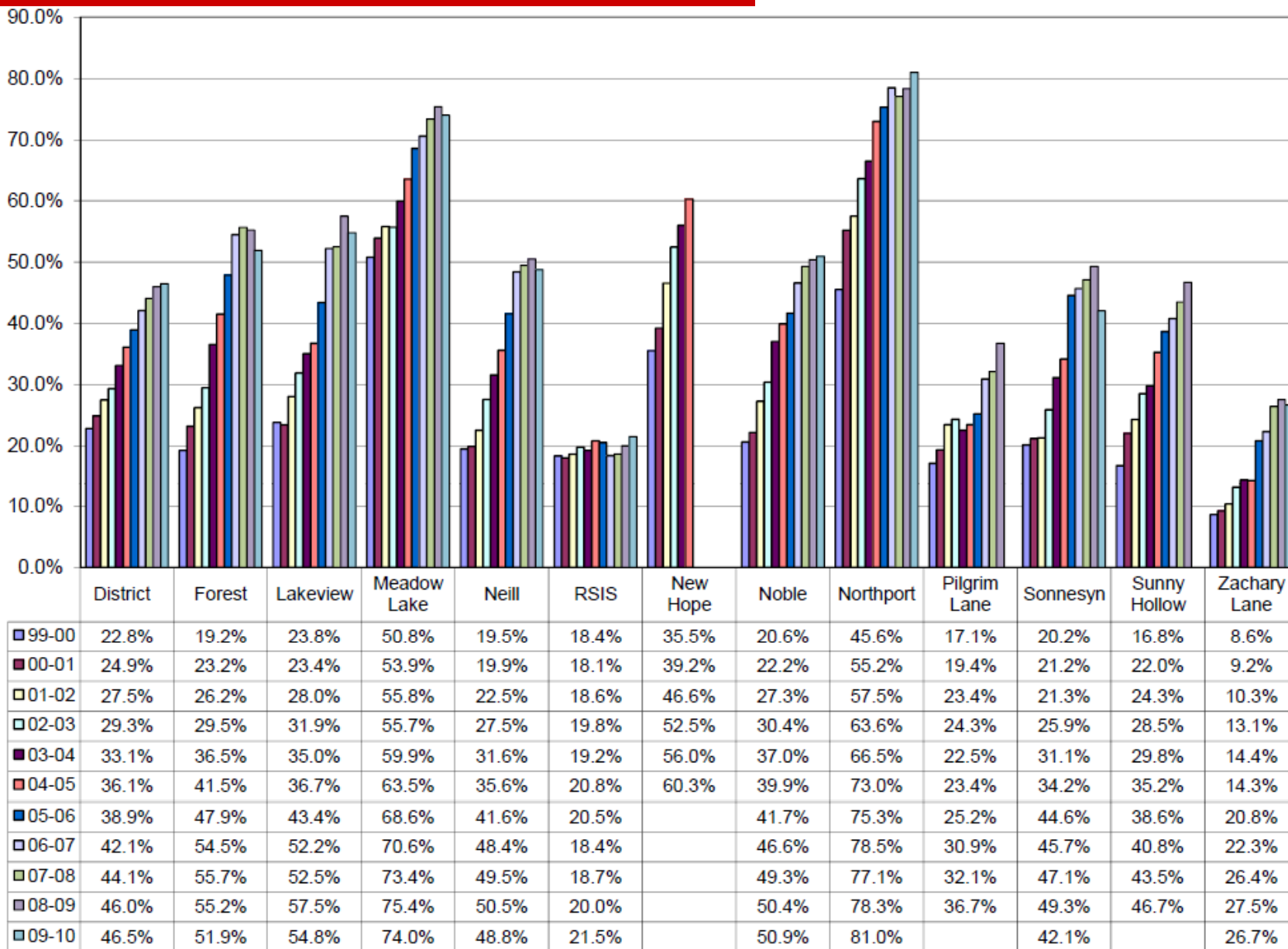
Elementary – Students Eligible for Free or Reduced Lunch



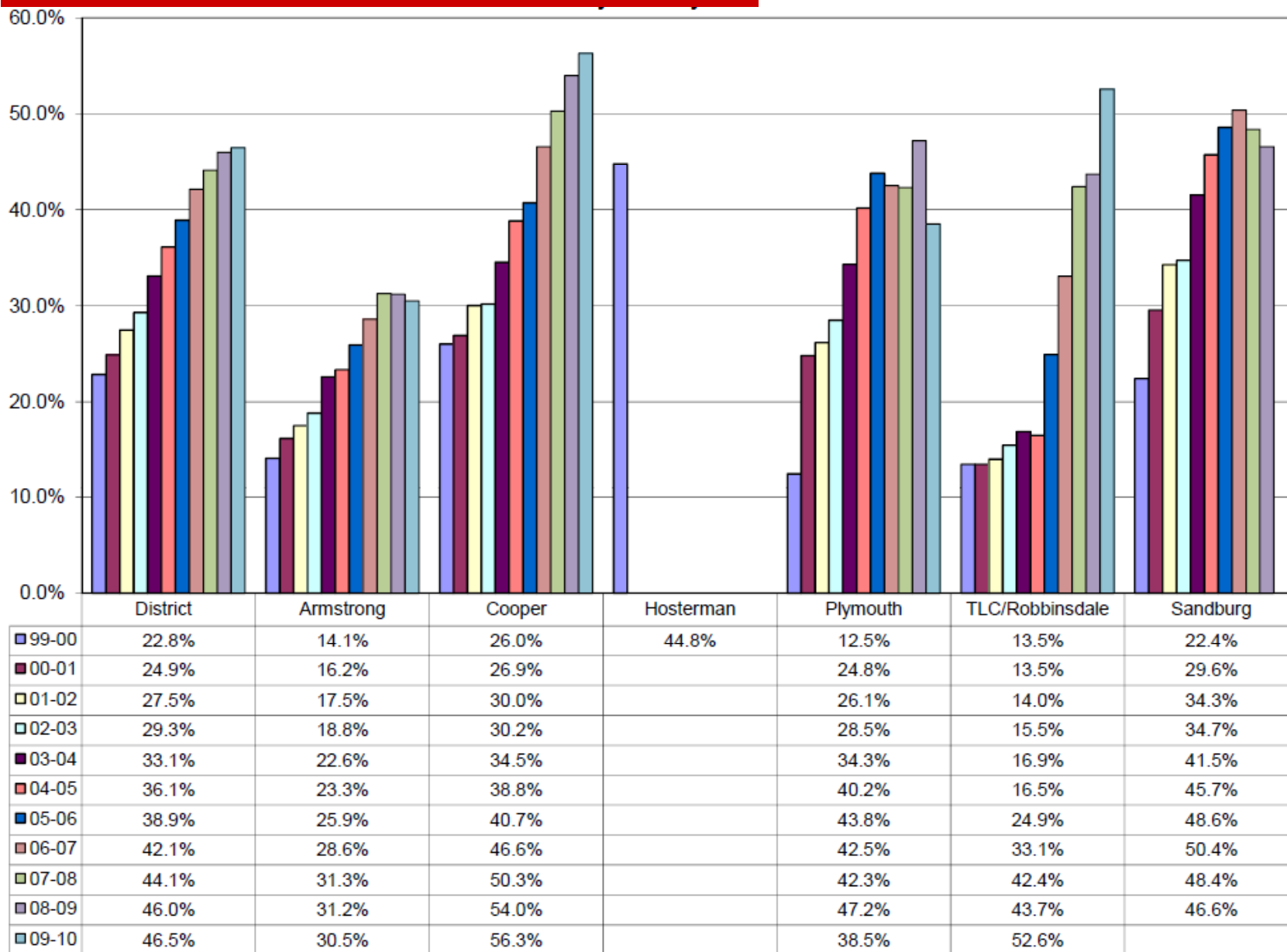
Secondary – Students Eligible for Free or Reduced Lunch



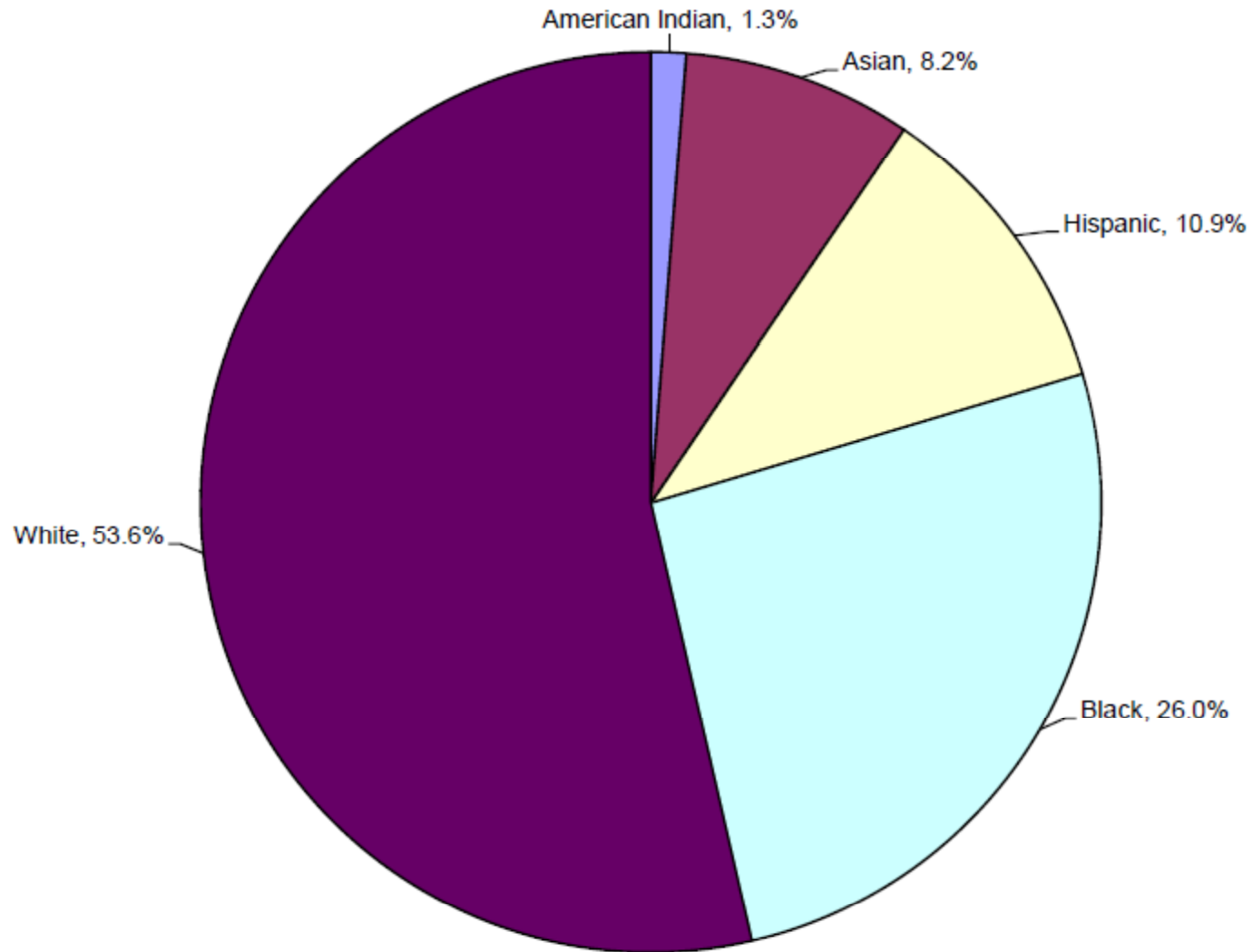
Elementary Minority Students



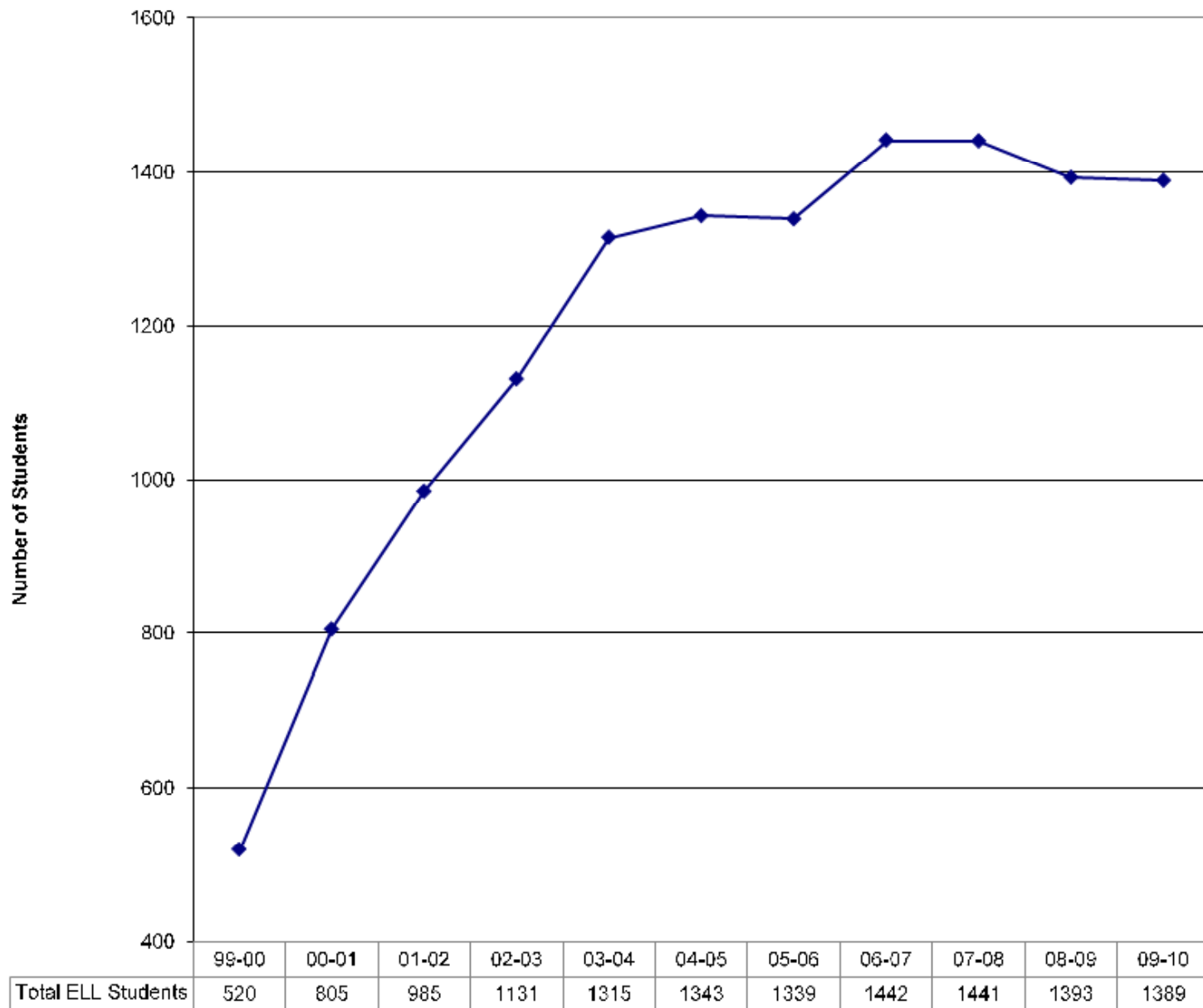
Secondary Minority Students



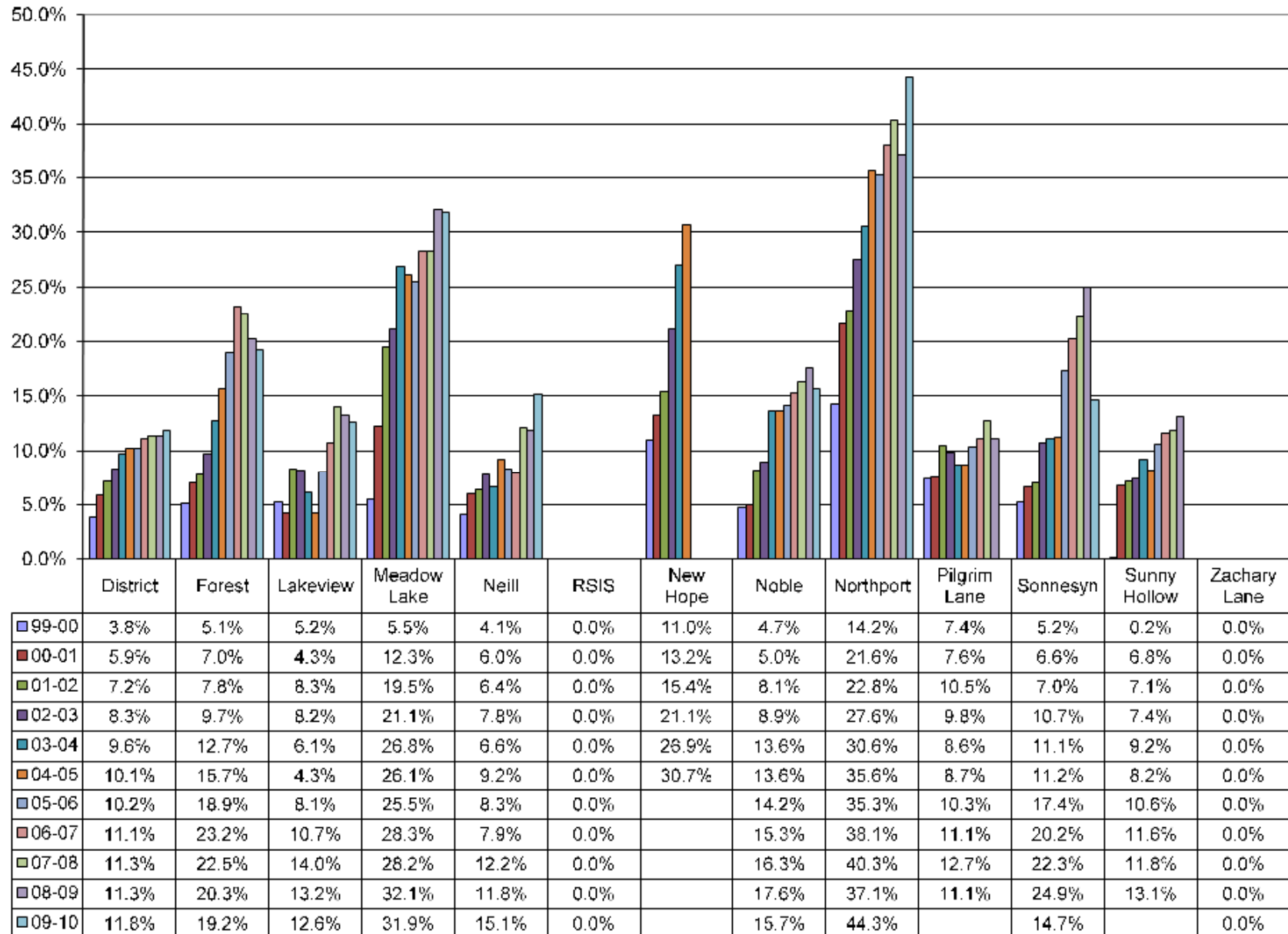
District Student Ethnic Profile



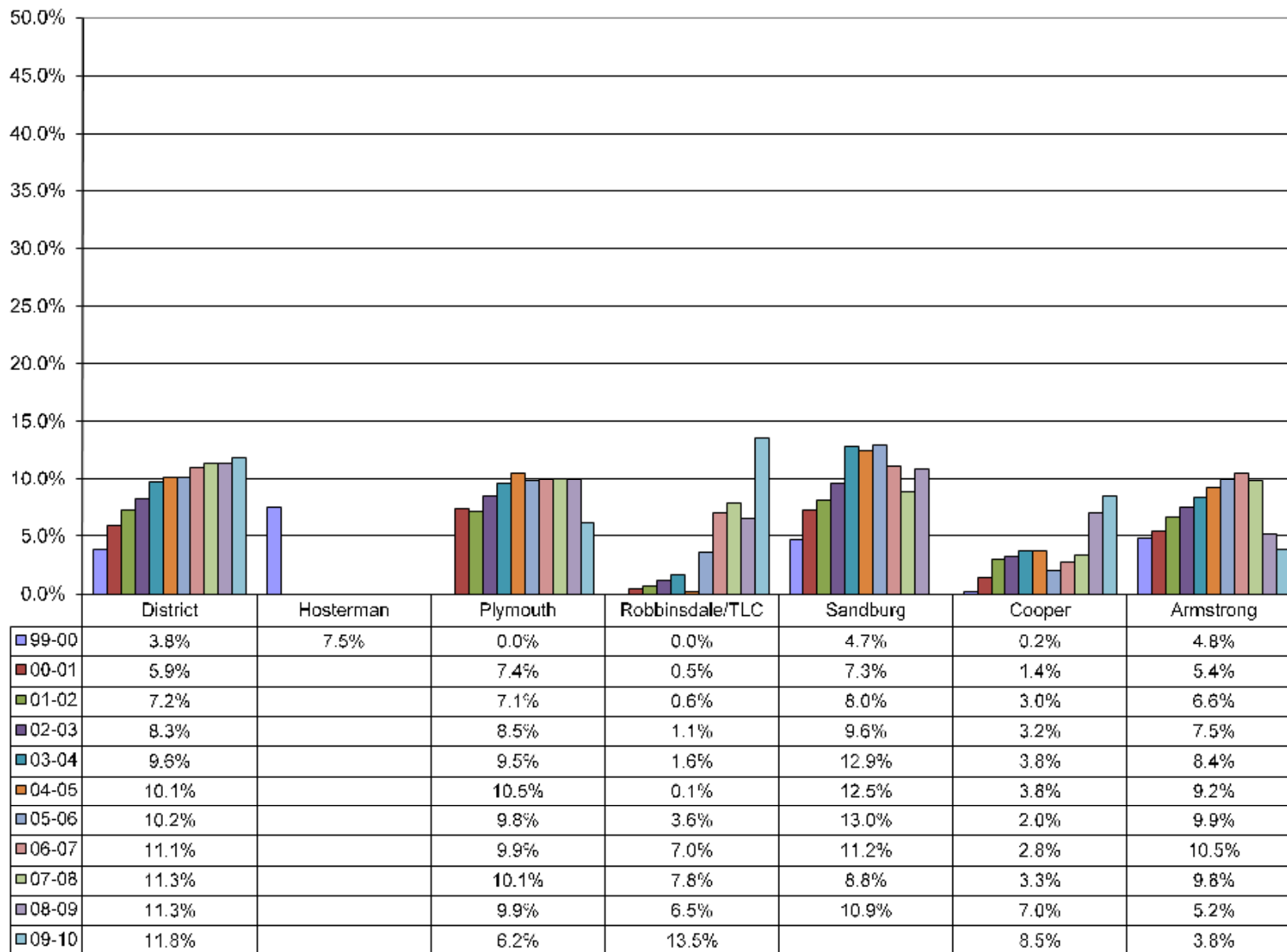
English Language Learners (ELL)



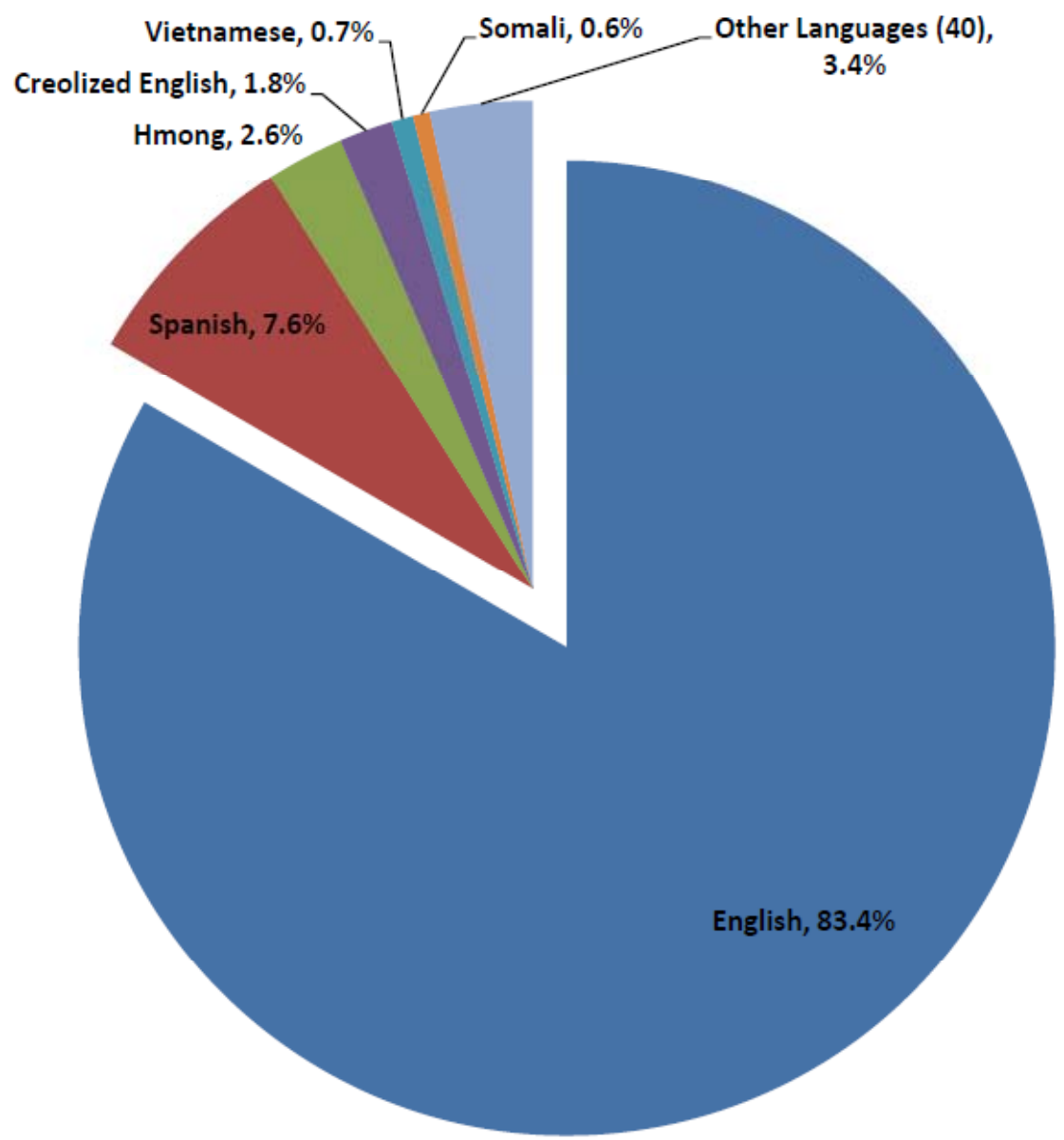
English Language Learners - Elementary



English Language Learners - Secondary



Student Home Language Profile – 2009-10



Demographic Summary

- ❑ The district mobility rate has decreased last year primarily due to the local economic climate and a difficult housing market.
- ❑ The number of students eligible for free or reduced lunch has increased significantly due to the adverse economic conditions and its impact on families.
- ❑ The district continues to become more ethnically diverse. This level of diversity is evident in census data for first and second ring suburban communities.
- ❑ The ELL student population is remaining relatively constant. Immigrant families are not moving into the community in large numbers because employment opportunities have decreased.

October 1 Class Size

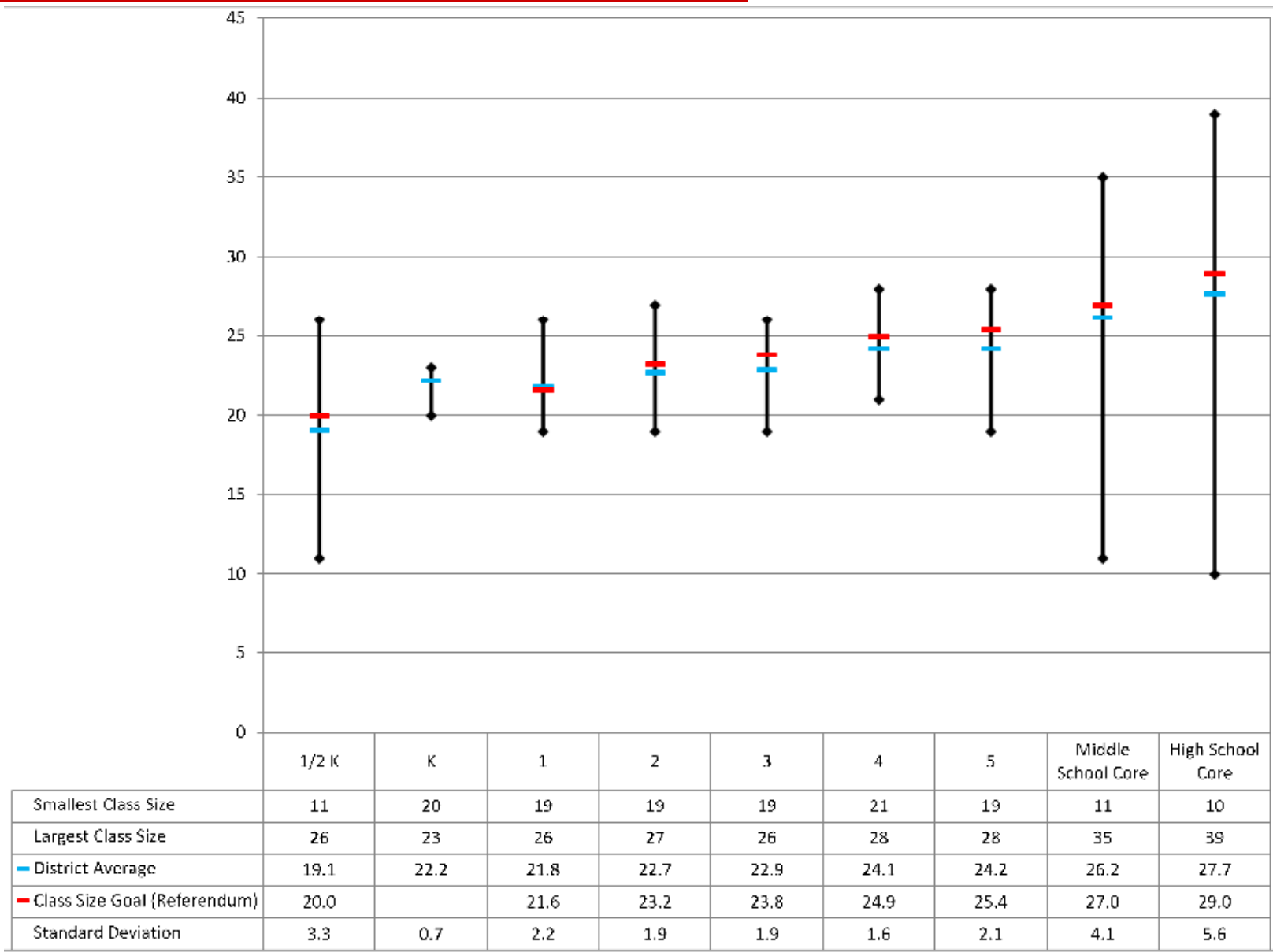
Average Class Size	1/2 K	K ¹	1st	2nd	3rd	4th	5th	MS Core ²	HS Core ²
Forest Elementary	22.0	23.0	25.8	23.8	24.4	25.3	24.3		
Lakeview Elementary	21.0	22.0	20.8	20.8	22.0	24.0	19.7		
Meadow Lake Elementary	14.3	22.0	20.8	22.2	19.6	22.4	24.5		
Neill Elementary	19.3	22.0	21.0	25.5	23.8	26.0	24.8		
Robbinsdale Spanish Immersion	22.0	22.5	22.2	21.8	21.8	25.8	23.0		
Noble Elementary	22.5	22.0	22.3	24.0	23.7	23.3	26.3		
Northport Elementary	17.5	21.7	19.6	20.2	20.8	24.0	24.0		
Sonnesyn Elementary	18.3	23.0	20.2	24.3	24.8	23.0	25.5		
Zachary Lane Elementary	18.3	21.0	24.8	23.0	25.0	24.3	24.8		
Plymouth Middle								26.4	
Robbinsdale Middle								26.1	
Cooper High School									27.5
Armstrong High School									28.0

District Summary	1/2 K	K ¹	1st	2nd	3rd	4th	5th	MS Core ²	HS Core ²
District Class Size Average	19.1	22.2	21.8	22.7	22.9	24.1	24.2	26.2	27.7
Avg Dist Class Size Goal (Referendum)	20.0	22.0	21.6	23.2	23.8	24.9	25.4	27.0	29.0
Number of Sections	27	16	39	38	39	34	35	398	478
Smallest Class Section	11	20	19	19	19	21	19	11	12
Largest Class Section	26	23	26	27	26	28	28	35	39
Standard Deviation	3.3	0.7	2.2	1.9	1.9	1.6	2.1	4.1	5.6
Number of Schools > Goal	4	3	4	4	3	3	2	0	0
Number of Schools <= Goal	5	6	5	5	6	6	7	2	2

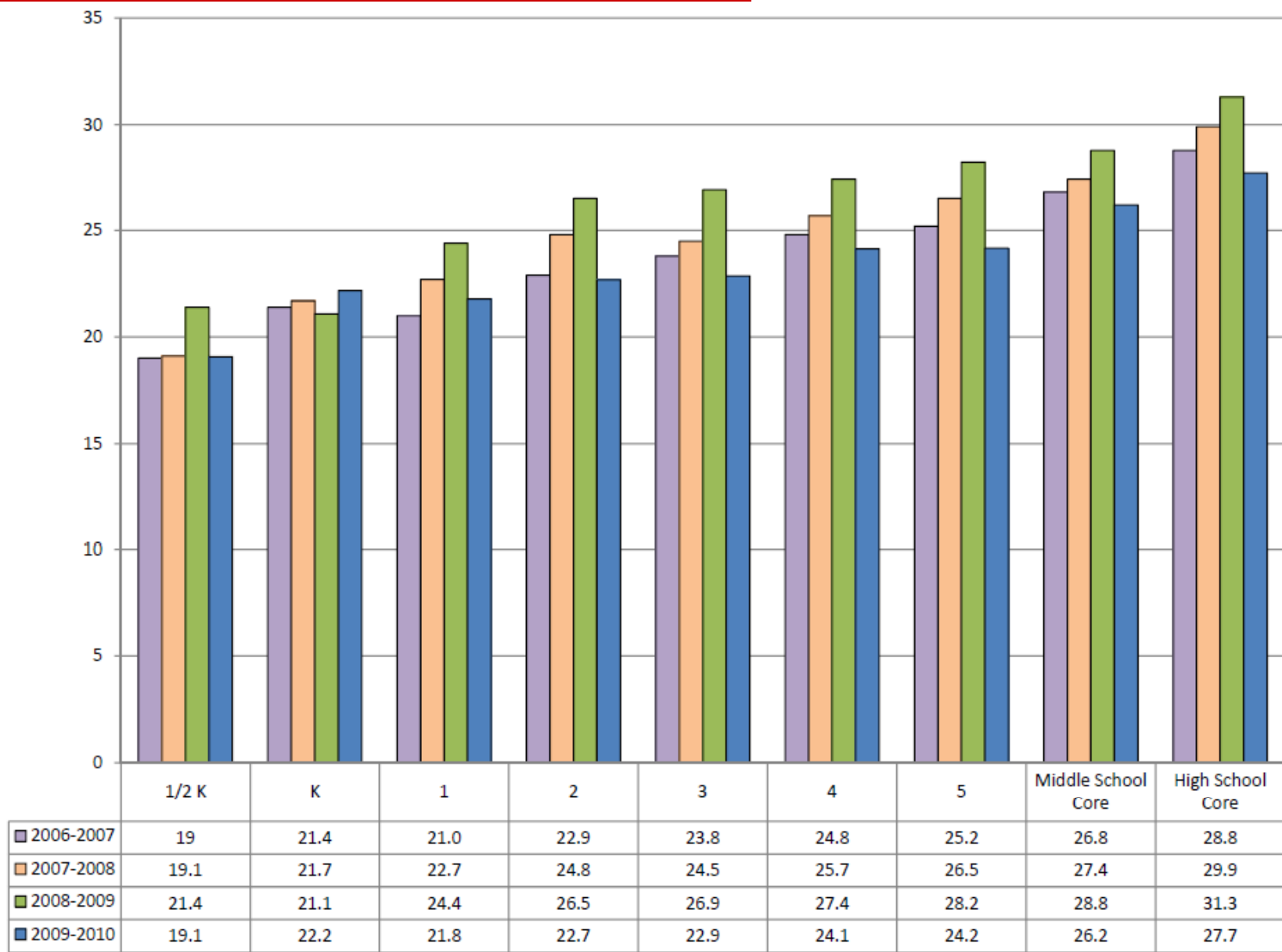
Notes

1. All day Kindergarten is partially funded by compensatory and tuition. The business model for staffing all-day sections assumes an average of 22 students per section. Lowering the average would require tuition increases.
2. Core Classes are defined as regular, intermediate or high level courses in the subject areas of English, Math, Science and Social Studies. Remedial and Special Education courses are not included.

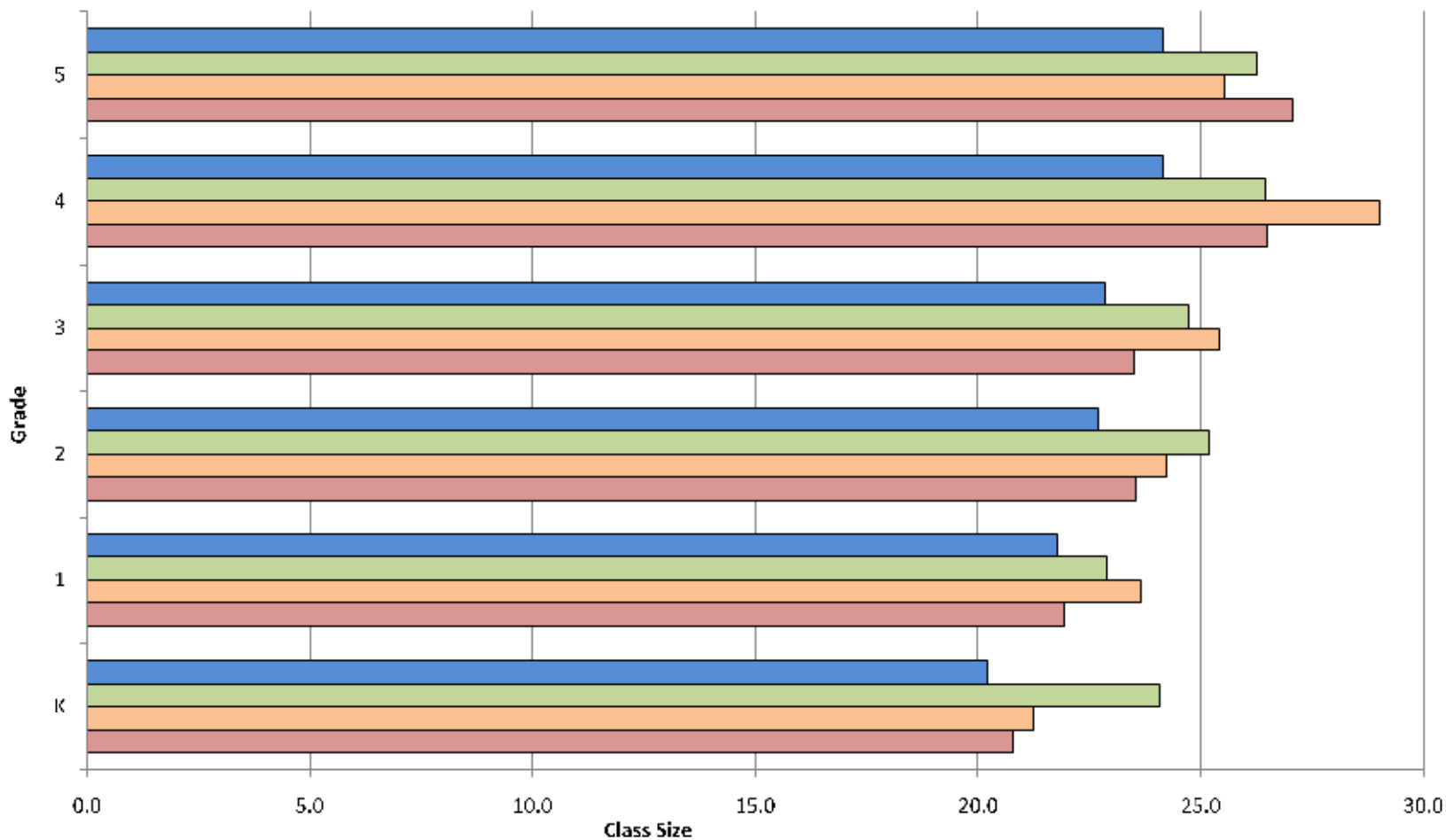
2009-2010 Class Size Analysis



District Class Size Averages 2006 - 2010



Elementary Average Class Size – District Comparison



	K	1	2	3	4	5
■ Robbinsdale	20.2	21.8	22.7	22.9	24.1	24.2
■ Hopkins *	24.1	22.9	25.2	24.7	26.4	26.3
■ Osseo *	21.2	23.6	24.2	25.4	29.0	25.5
■ Wayzata *	20.8	21.9	23.5	23.5	26.5	27.0

* Average of five elementary schools nearest Robbinsdale

Class Size Summary

- ❑ The district has used funds from the successful passage of an operating levy to meet and exceed district average class size goals.
- ❑ District average class sizes are lower than they have been in several years.
- ❑ Robbinsdale Area Schools average class size compares favorably with neighboring public schools.

Summary

- Due to declining enrollment and a desire to focus resources toward lower class sizes and instructional resources, the district closed three schools to right-size its facilities, save \$2 million annually and help the district operate more efficiently. As a result, school facilities are fully utilized and the number of students in each elementary and middle school are as high as we have seen in recent years.
- Using resources from right-sizing district facilities and the community-supported levy referendum, students are benefitting from the lowest average district wide class size we have seen in several years.